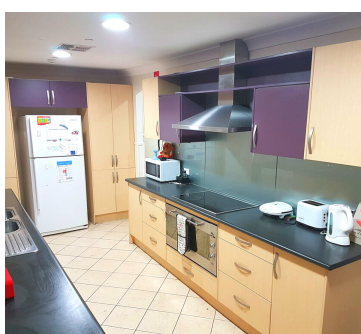
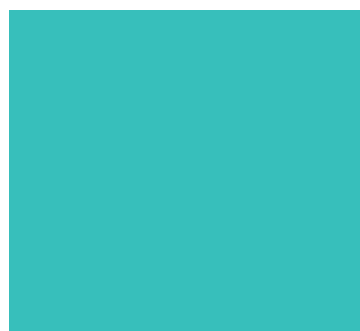


**SPECIALIST DISABILITY  
ACCOMMODATION**

**SUPPORTED INDEPENDENT  
LIVING**



**IMAGINE  
WERRINGTON**



QUALITY HEALTH CARE

**PROPERTY  
PROFILE**

# ABOUT THE PROPERTY

Imagine is a unique older style property desirably located in Western Sydney.

This single storey home has been cleverly re-modelled into two separate self-contained units, each with their own full sized kitchen, generous sized living and dining area, bathroom and private entry and pool access.

This service is for female residents only and would suit people who are quite independent, social and looking to build on their skills to live in a more independent setting.

Imagine is staffed 24/7 by an experienced team who can support you with daily life skills, budgeting and increased independence. Imagine offers plenty of social activities enabling you to connect with like-minded people.

## Unit One:

1 x 2 bedroom Basic SDA

## Unit Two:

1 x 1 bedroom Basic SDA

## PROPERTY FEATURES

- 1 x large common laundry
- 1 x large common kitchen
- 1 x staff office / sleepover room
- 1 x common rear garden
- 1 x inground pool
- 1 x outdoor living/recreational area

## WHAT'S NEAR BY

- Nepean Hospital
- Westfield Penrith
- Werrington Lake Reserve
- St Marys Village Shopping Centre
- Jamison Park
- Sydney Zoo
- Westfield Mt Druitt
- Blacktown sports and Athletics track

***Imagine is an all female home and boasts two separate units each with their own private entry and access.***



# NEXT STEPS

If you are interested in living at Imagine and you feel it will meet your living and support needs, please follow these steps to make an application:

# 1

## STEP ONE



Contact the QHC Intake team @ [intake@qualityhealthcare.com.au](mailto:intake@qualityhealthcare.com.au) or call us on (02) 9598 6000 to discuss the property in more detail and lodge your interest. We will ask you to complete a participant profile form to assist us to determine matching with available vacancies.

# 2

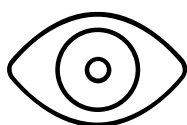
## STEP TWO



Organise a viewing of the property by liaising with the QHC Intake team on (02) 9598 6000

# 3

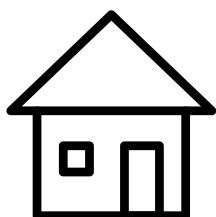
## STEP THREE



If you think the property is right for you complete an application form and share your NDIS Plan with the QHC Intake team as well as any other relevant reports and assessment documents.

# 4

## STEP FOUR



Once we get confirmation of SIL funding and the required SDA level we can submit a Roster of Care to the NDIS. Once approved and your plan is confirmed you can move into your new home.

